



QUICKDRAIN
USA™

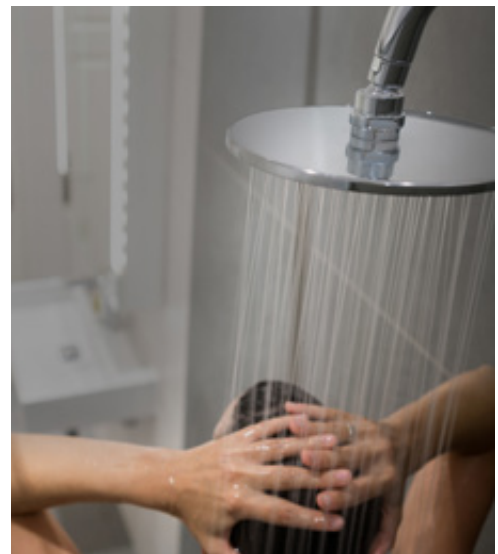
SQUAREDRAIN

L. R. BRANDS™
AN OATEY INNOVATION

SQUAREDRAIN

A more sophisticated shower solution.

Design is an integral part of the QuickDrain experience. Elegance and performance working together in tandem, a seamless blend of style and engineering. QuickDrain is a sophisticated curbed or curbless total shower solution, full of refined detail.



Stones Brushed Stainless Steel



Deco Brushed Gold

Elevate your shower design.

QuickDrain's SquareDrain is an elevated point drain shower system that stands out from the rest for its design, ease of use and versatility – helping homeowners, designers and installers create a spa-like bathroom experience.



SOPHISTICATED STYLE

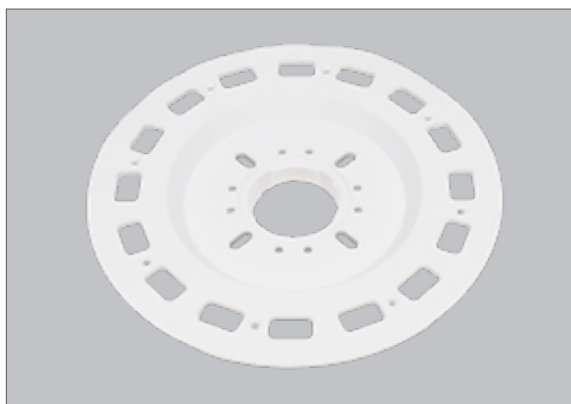
Choose from an extensive line of elegant drain cover designs, sizes, and finishes to achieve your desired style.



FUNCTIONAL DESIGN

Allows for easy maintenance with debris basket and cover key included. A standard drain outlet can handle up to 12 GPM* within the shower footprint.

**Actual volume is limited by the plumbing lines & P-trap*



VERSATILITY

With site-sizable PET QuickSlope panels, universal compatibility with flange adaptors, and multiple waterproofing options — flexibility in design makes the system job-site ready.



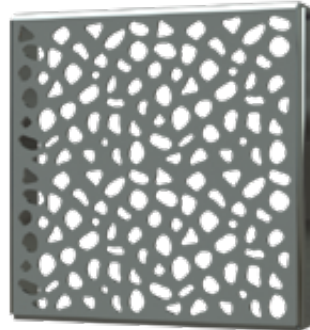
FASTER INSTALL

The QuickDrain SquareDrain shower system can be installed in two hours, saving time and money.

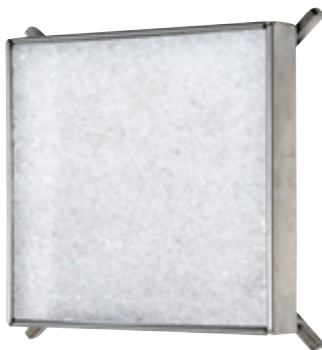
Cover designs for every style.



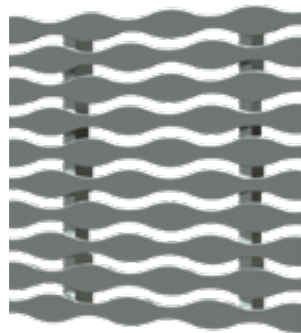
Deco



Stones



Tile-In
Tile not included



Stream 
MICHAEL GRAVES.
DESIGN



MICHAEL GRAVES[™]
DESIGN

SquareDrain's exclusive **Stream** drain cover was designed in collaboration with world-renowned designer Michael Graves.

All decorative covers are available in 4", 5", and 6" options and designs may vary by size. Browse LRBrands.com/QuickDrain to view all design and finish combinations.

Complete your look with the perfect finish.

SquareDrain offers eight finishes to accommodate a range of bathroom aesthetics – from a classic look in stainless steel to striking matte black – ensuring consistency throughout your project.



*Polished
Stainless Steel*



*Brushed
Stainless Steel*



Polished Gold



Brushed Gold



Polished Rose Gold



Oil Rubbed Bronze



Matte Black



Polished Black



Deco Brushed Stainless Steel

Elevate your shower design.

CURBLESS

A walk-in shower provides an elegant spa-like aesthetic removing visual clutter and making your bathroom feel larger, while keeping water in its place. This layout lends especially well to universal design.

Tile-In *Brushed Stainless Steel*



Easy Maintenance

Allows for easy maintenance with debris basket and cover key included. A standard drain outlet can handle up to 12 GPM* within the shower footprint.

**Actual volume is limited by the plumbing lines and P-trap*

Versatility

SquareDrain is a complete point drain system that provides endless job-site ready features and benefits:



- Drain bases available in both PVC and ABS paired with a Universal Flange Adaptor suitable for both topical sheet or topical liquid waterproofing – leaving preference to the installer
- Included weep guard and dual weep zone ensure proper drainage
- Elongated bolt slot pattern and hex bolts provide compatibility to numerous drain bases
- Can be used in both curbed and curbless installations

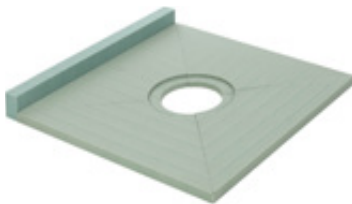


Ready to Test

Integrated quarter turn test plug comes with every base. No need for extra tools or knock outs.

All in a Matter of Hours

Projects with a traditional mud bed and pan liner application require a minimum of two days construction, waiting for mortar to set. The SquareDrain shower system can be installed in two hours.



The SquareDrain Point Pan is made of sustainable PET QuickSlope panels and is site-sizable. Even the smallest pan re-purposes 325 plastic bottles into a reusable building material. Larger configurations re-purpose up to 600 plastic bottles.

Waterproofing Flexibility

Compatible with both topical sheet and topical liquid waterproofing, the SquareDrain system allows the installer to choose the method of their choice.

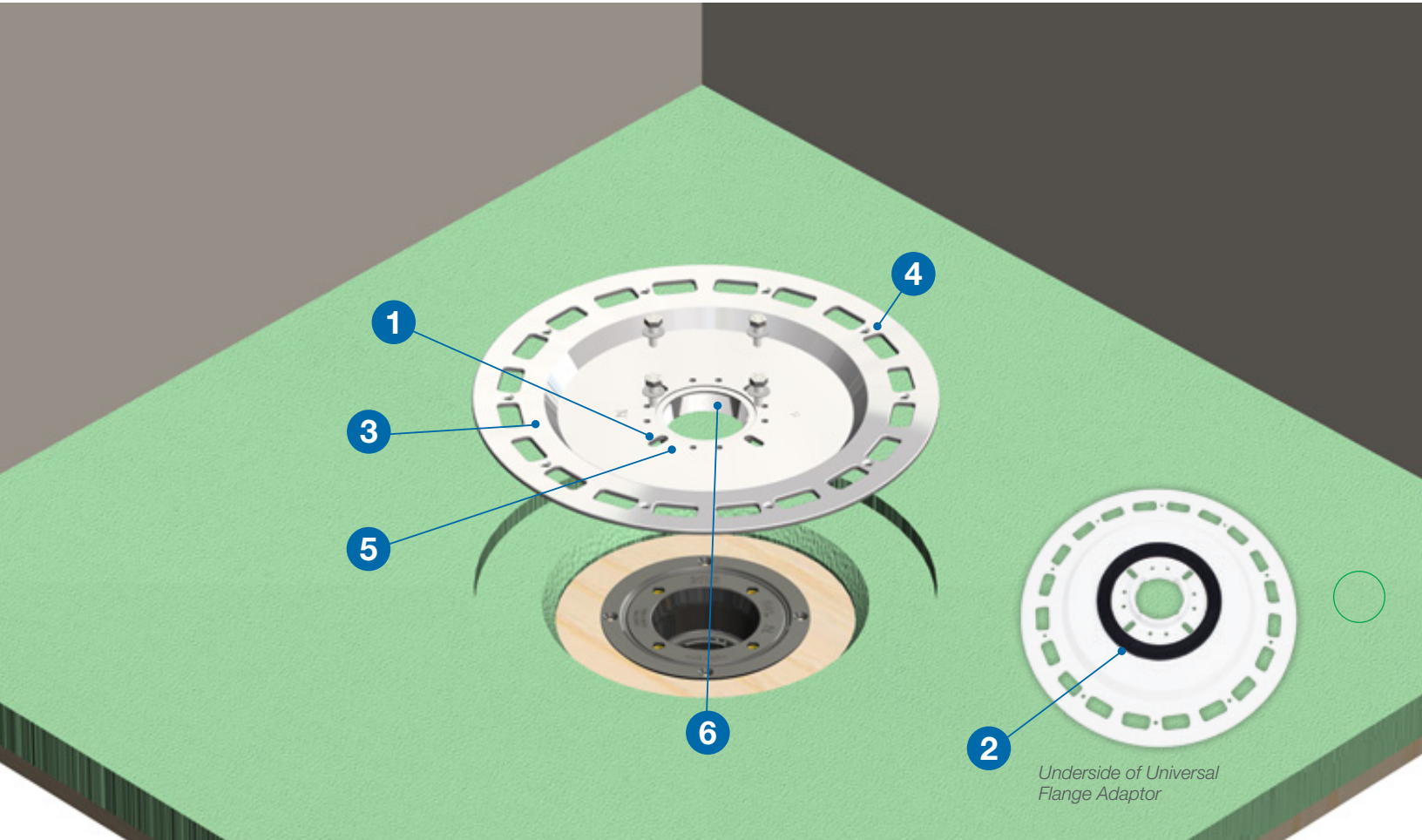


Topical membranes are engineered to be used as the shower pan and to cover the walls. Unlike traditional PVC/CPE pan liner, topical membranes can seamlessly move to tile or stone installation, eliminating steps and providing efficiency.



Versatile. Compatible. Functional.

QuickDrain's Patented Universal Flange Adaptor allows for versatility with installation options.



1. Universal Bolt Slots:

Features elongated hex bolt slots providing ultimate flexibility allowing the flange to adapt to numerous ABS and PVC drain bases.

2. Dual Profile Gasket:

Seals to the surface of the drain base and fastens in place with provided hex bolts and washers.

3. Textured Flange Surface:

The textured flange surface is designed to bond with topical sheet membrane and compatible to topical liquid waterproofing allowing the installer to choose based on their preference.

4. Strong Construction & Anchor Points:

Made of reinforced nylon molded in the USA and includes multiple countersunk locations to anchor to the subfloor.

5. Weep Zone:

Features many weep hole locations to promote proper wicking techniques, while also protected by the weep guard accessory.

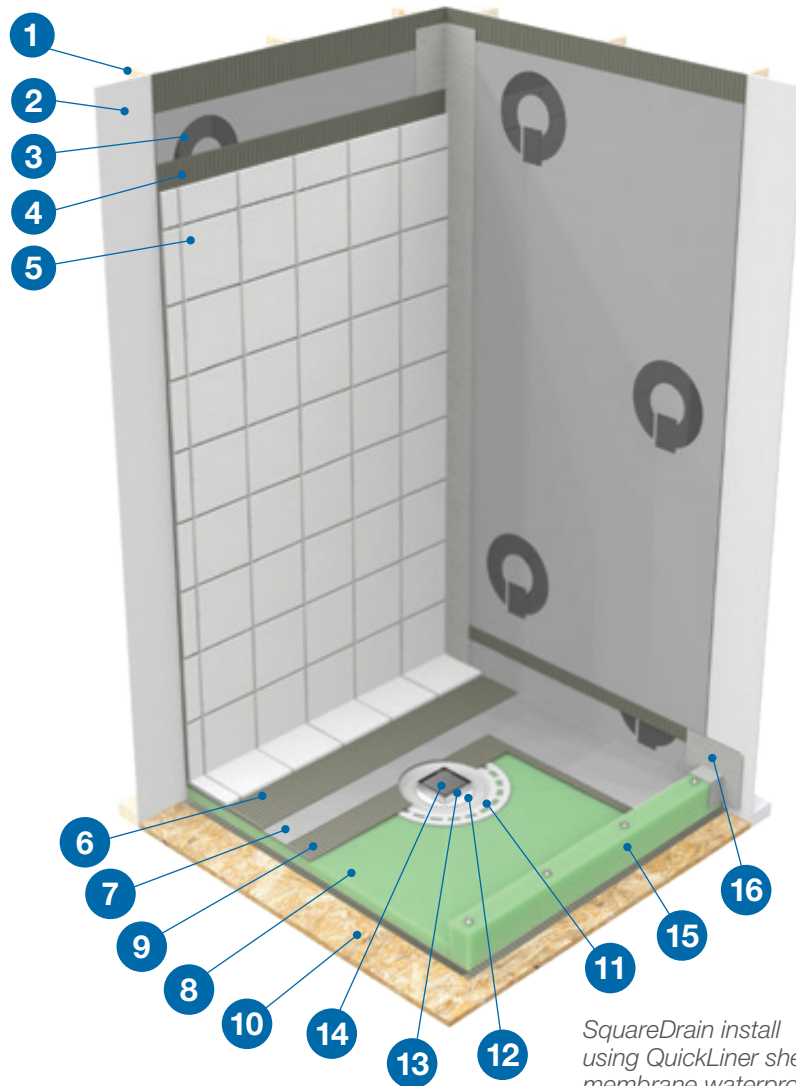
6. Integrated Threads:

Allows for a quick and easy installation of the SquareDrain drain body or traditional barrel assemblies. The interrupted threads make the assembly ready to test with our Oatey® 130 Series Tool-Free Test Plug.

A total shower solution. . .

QuickDrain is a complete shower system that reimagines how a point drain should be installed. The system slashes construction time, saves on cost, and minimizes impact on customers. SquareDrain is appropriate for both residential and commercial applications with or without a curb.

1. Stud Wall
2. Wall Board
3. Sheet Wall Waterproofing
4. Thinset (for wall tile)
5. Wall Tile & Grout
6. Thinset
7. Sheet Shower Pan Waterproofing
8. Counter-sloped PET Foam Point Pan
9. Thinset
10. Subfloor
11. Universal Flange Adaptor
12. Weep Guard
13. SquareDrain Drain Body
14. SquareDrain Cover
15. PET Foam Curb
16. Curb Cover



SquareDrain install using QuickLiner sheet membrane waterproofing

. . . with flexibility.

SquareDrain shower system offers the flexibility for the installer to choose their preferred installation methods. In addition to choosing from liquid or sheet waterproofing, the shower drain is compatible to install with traditional mud bed. Also, SquareDrain bodies are compatible to traditional PVC/CPE liner installations.

Ordering SquareDrain is fast & simple.

Evaluate Your Project Space

Verify structural integrity within shower footprint (level sub-floor and square framing). Sketch the desired layout measurements – include drain location and subfloor material.

When you are ready, contact your local QuickDrain USA dealer to place your order. To make the ordering process seamless, complete the following steps using the part number pages in the back of the brochure:

1. Select decorative drain cover design, size & finish.

COVER PART NO. _____

2. Select drain body and flange adaptor assortment.

a. Choose a drain body based on your cover size and finish.

DRAIN BODY PART NO. _____

b. Choose flange adaptor and accessories size to complement drain body.
Large flange adaptor and accessories are compatible with 5" or 6" drain body, while small flange adaptor and accessories are compatible with 4" drain body.

FLANGE ADAPTOR AND ACCESSORIES PART NO. _____

3. Select QuickSlope PET Kit.

PET KIT PART NO. _____

4. Select liquid or sheet waterproofing.

WATERPROOFING PART NO. _____

5. Select a BenchSeat™ to complement your shower installation.

BENCHSEAT™ PART NO. _____

Technical Support & Job Site Assistance

Our team is able to provide expert on-site instruction and support. We also help by providing early design drawings to get your project started off right.



QUESTIONS?

Call 866-998-6685

Email info@lrbrands.com

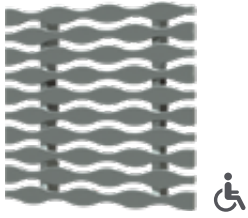
For a complete list of QuickDrain parts, materials and design options, visit LRBrands.com/QuickDrain or call 866.998.6685



Stream *Brushed Stainless Steel*

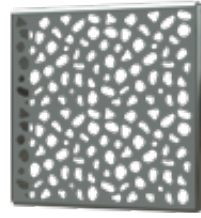
Select the perfect design and finish for your project.

Step 1: Select Decorative Drain Cover Design, Size & Finish



STREAM *Brushed Stainless Steel*

PART NO.	SIZE	FINISH
STREAM04	4"	BRUSHED STAINLESS STEEL
STREAM04-P	4"	POLISHED STAINLESS STEEL
STREAM04-BG	4"	BRUSHED GOLD
STREAM04-PG	4"	POLISHED GOLD
STREAM04-MB	4"	MATTE BLACK
STREAM04-PB	4"	POLISHED BLACK
STREAM04-ORB	4"	OIL RUBBED BRONZE
STREAM04-PRG	4"	POLISHED ROSE GOLD
STREAM05	5"	BRUSHED STAINLESS STEEL
STREAM05-P	5"	POLISHED STAINLESS STEEL
STREAM05-BG	5"	BRUSHED GOLD
STREAM05-PG	5"	POLISHED GOLD
STREAM05-MB	5"	MATTE BLACK
STREAM05-PB	5"	POLISHED BLACK
STREAM05-ORB	5"	OIL RUBBED BRONZE
STREAM05-PRG	5"	POLISHED ROSE GOLD
STREAM06	6"	BRUSHED STAINLESS STEEL
STREAM06-P	6"	POLISHED STAINLESS STEEL
STREAM06-BG	6"	BRUSHED GOLD
STREAM06-PG	6"	POLISHED GOLD
STREAM06-MB	6"	MATTE BLACK
STREAM06-PB	6"	POLISHED BLACK
STREAM06-ORB	6"	OIL RUBBED BRONZE
STREAM06-PRG	6"	POLISHED ROSE GOLD



STONES *Brushed Stainless Steel*

PART NO.	SIZE	FINISH
STONES04	4"	BRUSHED STAINLESS STEEL
STONES04-P	4"	POLISHED STAINLESS STEEL
STONES04-BG	4"	BRUSHED GOLD
STONES04-PG	4"	POLISHED GOLD
STONES04-MB	4"	MATTE BLACK
STONES04-PB	4"	POLISHED BLACK
STONES04-ORB	4"	OIL RUBBED BRONZE
STONES04-PRG	4"	POLISHED ROSE GOLD
STONES05	5"	BRUSHED STAINLESS STEEL
STONES05-P	5"	POLISHED STAINLESS STEEL
STONES05-BG	5"	BRUSHED GOLD
STONES05-PG	5"	POLISHED GOLD
STONES05-MB	5"	MATTE BLACK
STONES05-PB	5"	POLISHED BLACK
STONES05-ORB	5"	OIL RUBBED BRONZE
STONES05-PRG	5"	POLISHED ROSE GOLD
STONES06	6"	BRUSHED STAINLESS STEEL
STONES06-P	6"	POLISHED STAINLESS STEEL
STONES06-BG	6"	BRUSHED GOLD
STONES06-PG	6"	POLISHED GOLD
STONES06-MB	6"	MATTE BLACK
STONES06-PB	6"	POLISHED BLACK
STONES06-ORB	6"	OIL RUBBED BRONZE
STONES06-PRG	6"	POLISHED ROSE GOLD

Available Finishes



DECO *Brushed Stainless Steel*

PART NO.	SIZE	FINISH
DEC004	4"	BRUSHED STAINLESS STEEL
DEC004-P	4"	POLISHED STAINLESS STEEL
DEC004-BG	4"	BRUSHED GOLD
DEC004-PG	4"	POLISHED GOLD
DEC004-MB	4"	MATTE BLACK
DEC004-PB	4"	POLISHED BLACK
DEC004-ORB	4"	OIL RUBBED BRONZE
DEC004-PRG	4"	POLISHED ROSE GOLD
DEC005	5"	BRUSHED STAINLESS STEEL
DEC005-P	5"	POLISHED STAINLESS STEEL
DEC005-BG	5"	BRUSHED GOLD
DEC005-PG	5"	POLISHED GOLD
DEC005-MB	5"	MATTE BLACK
DEC005-PB	5"	POLISHED BLACK
DEC005-ORB	5"	OIL RUBBED BRONZE
DEC005-PRG	5"	POLISHED ROSE GOLD
DEC006	6"	BRUSHED STAINLESS STEEL
DEC006-P	6"	POLISHED STAINLESS STEEL
DEC006-BG	6"	BRUSHED GOLD
DEC006-PG	6"	POLISHED GOLD
DEC006-MB	6"	MATTE BLACK
DEC006-PB	6"	POLISHED BLACK
DEC006-ORB	6"	OIL RUBBED BRONZE
DEC006-PRG	6"	POLISHED ROSE GOLD

NOTE: A 4-6 week lead time may apply on decorative covers with a specialty finish depending on order quantity and cover design.



TILE NOT INCLUDED

TILE-IN *Brushed Stainless Steel*

PART NO.	SIZE	FINISH
TILEIN04	4"	BRUSHED STAINLESS STEEL
TILEIN05	5"	BRUSHED STAINLESS STEEL
TILEIN06	6"	BRUSHED STAINLESS STEEL

Care & Maintenance

As with any fine decorative surface, a drain cover will retain its luster for years to come with proper care and maintenance. Wash with a soft cloth and blot dry with clean, dry soft cloth. For more details about maintenance and care, see the installation guide.



Stones *Brushed Gold*

Complete your total shower solution.

Step 2a: Select Drain Body



DRAIN BODY

PART NO.	SIZE	FINISH	INCLUDES
CPD04	4"	BRUSHED STAINLESS STEEL	(1) SquareDrain Drain Body (1) 2" Threaded Outlet Adaptor (1) Cover Removal Key (1) Debris Basket
CPD04-BG	4"	BRUSHED GOLD <i>(suitable for polished gold covers)</i>	(1) SquareDrain Drain Body (1) 2" Threaded Outlet Adaptor (1) Cover Removal Key (1) Debris Basket
CPD04-MB	4"	MATTE BLACK <i>(suitable for polished black covers)</i>	(1) SquareDrain Drain Body (1) 2" Threaded Outlet Adaptor (1) Cover Removal Key (1) Debris Basket
CPD04-ORB	4"	OIL RUBBED BRONZE	(1) SquareDrain Drain Body (1) 2" Threaded Outlet Adaptor (1) Cover Removal Key (1) Debris Basket
CPD04-PRG	4"	POLISHED ROSE GOLD	(1) SquareDrain Drain Body (1) 2" Threaded Outlet Adaptor (1) Cover Removal Key (1) Debris Basket
CPD05	5"	BRUSHED STAINLESS STEEL	(1) SquareDrain Drain Body (1) 2" Threaded Outlet Adaptor (1) Cover Removal Key (1) Debris Basket
CPD05-BG	5"	BRUSHED GOLD <i>(suitable for polished gold covers)</i>	(1) SquareDrain Drain Body (1) 2" Threaded Outlet Adaptor (1) Cover Removal Key (1) Debris Basket
CPD05-MB	5"	MATTE BLACK <i>(suitable for polished black covers)</i>	(1) SquareDrain Drain Body (1) 2" Threaded Outlet Adaptor (1) Cover Removal Key (1) Debris Basket
CPD05-ORB	5"	OIL RUBBED BRONZE	(1) SquareDrain Drain Body (1) 2" Threaded Outlet Adaptor (1) Cover Removal Key (1) Debris Basket
CPD05-PRG	5"	POLISHED ROSE GOLD	(1) SquareDrain Drain Body (1) 2" Threaded Outlet Adaptor (1) Cover Removal Key (1) Debris Basket



Deco Polished Stainless Steel



Stream Brushed Stainless Steel

PART NO.	SIZE	FINISH	INCLUDES
CPD06	6"	BRUSHED STAINLESS STEEL	(1) SquareDrain Drain Body (1) 2" Threaded Outlet Adaptor (1) Cover Removal Key (1) Debris Basket
CPD06-BG	6"	BRUSHED GOLD <i>(suitable for polished gold covers)</i>	(1) SquareDrain Drain Body (1) 2" Threaded Outlet Adaptor (1) Cover Removal Key (1) Debris Basket
CPD06-MB	6"	MATTE BLACK <i>(suitable for polished black covers)</i>	(1) SquareDrain Drain Body (1) 2" Threaded Outlet Adaptor (1) Cover Removal Key (1) Debris Basket
CPD06-ORB	6"	OIL RUBBED BRONZE	(1) SquareDrain Drain Body (1) 2" Threaded Outlet Adaptor (1) Cover Removal Key (1) Debris Basket
CPD06-PRG	6"	POLISHED ROSE GOLD	(1) SquareDrain Drain Body (1) 2" Threaded Outlet Adaptor (1) Cover Removal Key (1) Debris Basket

NOTE: For traditional mortar bed installation with two-piece clamping collar drain, choose drain body and cover. See Oatey catalog for full list of waterproofing membrane and accessories.

Complete your total shower solution.

Step 2b: Select Flange Adaptor and Accessories



FLANGE ADAPTOR AND ACCESSORIES

New Construction Solutions

PART NO.	DESCRIPTION	INCLUDES
QDPVCFULLKIT-SF	SMALL UNIVERSAL FLANGE ADAPTOR FULL KIT WITH PVC DRAIN ASSEMBLY & ACCESSORIES	(1) Small Reinforced Nylon Flange Adaptor, (1) PVC Drain Base, (1) Tool-Free Test Plug, (1) Weep Protector, (4) Washers, (4) Hex Bolts
QDABSFULLKIT-SF	SMALL UNIVERSAL FLANGE ADAPTOR FULL KIT WITH ABS DRAIN ASSEMBLY & ACCESSORIES	(1) Small Reinforced Nylon Flange Adaptor, (1) ABS Drain Base, (1) Tool-Free Test Plug, (1) Weep Protector, (4) Washers, (4) Hex Bolts
QDPVCFULLKIT-LF	LARGE UNIVERSAL FLANGE ADAPTOR FULL KIT WITH PVC DRAIN ASSEMBLY & ACCESSORIES	(1) Large Reinforced Nylon Flange Adaptor, (1) PVC Drain Base, (1) Tool-Free Test Plug, (1) Weep Protector, (4) Washers, (4) Hex Bolts
QDABSFULLKIT-LF	LARGE UNIVERSAL FLANGE ADAPTOR FULL KIT WITH ABS DRAIN ASSEMBLY & ACCESSORIES	(1) Large Reinforced Nylon Flange Adaptor, (1) ABS Drain Base, (1) Tool-Free Test Plug, (1) Weep Protector, (4) Washers, (4) Hex Bolts

FLANGE ADAPTOR AND ACCESSORIES

Renovation/Conversion Solutions

PART NO.	DESCRIPTION	INCLUDES
QDCONVERSIONKIT-SF	SMALL UNIVERSAL FLANGE ADAPTOR CONVERSION KIT & ACCESSORIES	(1) Small Reinforced Nylon Flange Adaptor, (1) Weep Protector, (4) Washers, (4) Hex Bolts
QDCONVERSIONKIT-LF	LARGE UNIVERSAL FLANGE ADAPTOR CONVERSION KIT & ACCESSORIES	(1) Large Reinforced Nylon Flange Adaptor, (1) Weep Protector, (4) Washers, (4) Hex Bolts

NOTE: Drain base sold independently of flange kit

HOW TO SELECT YOUR FLANGE ADAPTOR AND ACCESSORIES

New Construction Solution	Renovation/Conversion Solution
Select the new construction kit when you are beginning a project from scratch.	A Conversion Kit may be required when an approved ABS/PVC two-piece clamping collar drain is already installed.
Large Flange	Small Flange
Large flange assortments are compatible with 5" or 6" drain body assembly.	Small Flange assortments are compatible with a 4" drain body assembly.



Stones *Brushed Gold*



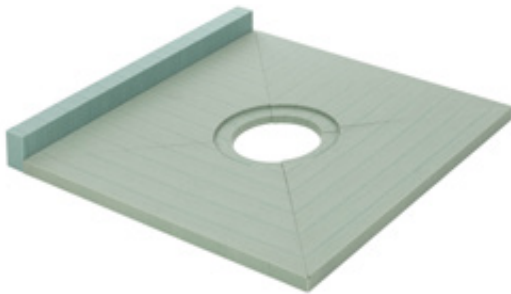
Stream *Matte Black*



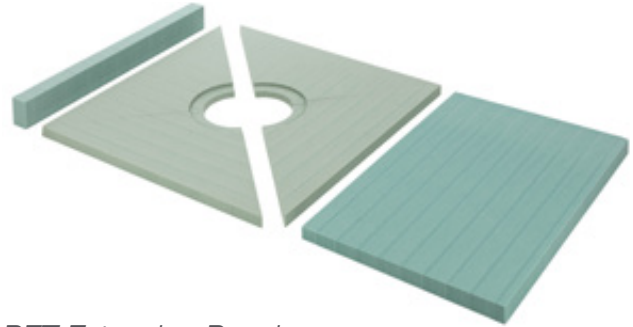
Stream *Brushed Stainless Steel*

Complete your total shower solution.

Step 3: Select QuickSlope PET Kit



PET Point Pan



PET Extension Panel

PART NO.	SIZE	DESCRIPTION	INCLUDES
SDPAN36-SF	36" x 36"	SQUAREDRAIN POINT PAN 36 IN X 36 FOR USE WITH SMALL FLANGE. Req. w/ CPD04	(4) Point QuickSlope Panels 36" w/ Small Flange Recess, (1) 3" Formed Curb, (4) Curb Lag Screws
SDPAN48-SF	48" x 48"	SQUAREDRAIN POINT PAN 48 IN X 48 IN FOR SMALL FLANGE. Req. w/ CPD04	(4) Point QuickSlope Panels 48" w/ Small Flange Recess, (1) 3" Formed Curb, (4) Curb Lag Screws
SDPAN36-LF	36" x 36"	SQUAREDRAIN POINT PAN 36 IN X 36 IN FOR LARGE FLANGE. Req. w/ CPD05, CPD06	(4) Point QuickSlope Panels 36" w/ Large Flange Recess, (1) 3" Formed Curb, (4) Curb Lag Screws
SDPAN48-LF	48" x 48"	SQUAREDRAIN POINT PAN 48 IN X 48 IN FOR LARGE FLANGE. Req. w/ CPD05, CPD06	(4) Point QuickSlope Panels 48" w/ Large Flange Recess, (1) 3" Formed Curb, (4) Curb Lag Screws
SDQSEX2436	24" x 36"	QUICKSLOPE EXTENSION PANEL FOR USE WITH SDPAN36-SF, SDPAN36-LF	(1) Point QuickSlope Extension (PET Foam)
SDQSEX2448	24" x 48"	QUICKSLOPE EXTENSION PANEL FOR USE WITH SDPAN48-SF, SDPAN48-LF	(1) Point QuickSlope Extension (PET Foam)
SLCURB	2-1/2" x 3-4/5" x 60"	CURB (Single 2-1/2" x 3-4/5" x 60" PET Curb) FOR USE WITH STANDARD SHOWERS REQUIRING AN EXTENSION PANEL	(1) 2-1/2" x 3-4/5" x 60" PET Curb
SDCURB36	-	CURB (Single 2-1/2" x 3-4/5" x 36" PET Curb) FOR USE WITH SDPAN36	(1) 2-1/2" x 3-4/5" x 36" PET Curb
SDCURB48	-	CURB (Single 2-1/2" x 3-4/5" x 60" PET Curb) FOR USE WITH SDPAN48	(1) 2-1/2" x 3-4/5" x 48" PET Curb



Stream *Matte Black* **Deco** *Oil Rubbed Bronze*

PART NO.	SIZE	DESCRIPTION	INCLUDES
SDPAN36-SF-ADA	36" x 36"	SQUAREDRAIN POINT PAN 36 IN X 36 IN FOR USE WITH SMALL FLANGE. Req. w/ CPD04 FOR USE WITH ADA AND CURBLESS SHOWERS (SMALL FLANGE)	(4) Point QuickSlope Panels 36" w/ Small Flange Recess
SDPAN48-SF-ADA	48" x 48"	SQUAREDRAIN POINT PAN 48 IN X 48 IN FOR SMALL FLANGE. Req. w/ CPD04 FOR USE WITH ADA AND CURBLESS SHOWERS (SMALL FLANGE)	(4) Point QuickSlope Panels 48" w/ Small Flange Recess
SDPAN36-LF-ADA	36" x 36"	SQUAREDRAIN POINT PAN 36 IN X 36 IN FOR LARGE FLANGE. Req. w/ CPD05, CPD06 KIT FOR USE WITH ADA AND CURBLESS SHOWERS (LARGE FLANGE)	(4) Point QuickSlope Panels 36" w/ Large Flange Recess
SDPAN48-LF-ADA	48" x 48"	SQUAREDRAIN POINT PAN 48 IN X 48 IN FOR LARGE FLANGE Req. w/ CPD05, CPD06 KIT FOR USE WITH ADA AND CURBLESS SHOWERS (LARGE FLANGE)	(4) Point QuickSlope Panels 48" w/ Large Flange Recess

NOTE: In a curbless entry where point drain placement is at the center of the shower footprint, the floor must be recessed to accommodate the proper elevations and code required slope. Always confirm that subfloor meets the building code in curbless applications by consulting local officials.

Complete your total shower solution.

Step 4: Select Waterproofing Kit



Waterproof Membrane Kit



Liquid Waterproof Kit*

PART NO.	SIZE	DESCRIPTION	INCLUDES
SDSWP36	52" x 78"	QUICKLINE WATERPROOF MEMBRANE 78 IN. WIDE (52" X 78")	52" X 78" Membrane, (4) Inside Corners, (2) Curb Covers, (1) QDMUS Sealant Tube
SDSWP48	64" x 78"	QUICKLINE WATERPROOF MEMBRANE 78 IN. WIDE (64" X 78")	64" X 78" Membrane, (4) Inside Corners, (2) Curb Covers, (1) QDMUS Sealant Tube
SDLWP-SF	-	LIQUID WATERPROOFING* ACCESSORIES KIT FOR USE WITH STANDARD SHOWERS (COMPATIBLE WITH SMALL FLANGE ASSORTMENTS)	(4) Inside Corners, (2) Curb Covers, (1) Reinforcement Fabric, (1) SquareDrain Reinforcement Collar for Small Flange
SDLWP-LF	-	LIQUID WATERPROOFING* ACCESSORIES KIT FOR USE WITH STANDARD SHOWERS (COMPATIBLE WITH SMALL FLANGE ASSORTMENTS)	(4) Inside Corners, (2) Curb Covers, (1) Reinforcement Fabric, (1) SquareDrain Reinforcement Collar for Large Flange
SDLWP-ADA-SF	-	LIQUID WATERPROOFING* ACCESSORIES KIT FOR USE WITH ADA AND CURBLESS SHOWERS (SMALL FLANGE)	(4) Inside Corners, (2) Outside Corners, (1) Reinforcement Fabric, (1) SquareDrain Reinforcement Collar for Small Flange
SDLWP-ADA-LF	-	LIQUID WATERPROOFING* ACCESSORIES KIT FOR USE WITH ADA AND CURBLESS SHOWERS (LARGE FLANGE)	(4) Inside Corners, (2) Outside Corners, (1) Reinforcement Fabric, (1) SquareDrain Reinforcement Collar for Large Flange

*Liquid waterproofing sold separately



Step 5: Select a BenchSeat™ to complement your shower installation



Small Triangular BenchSeat™



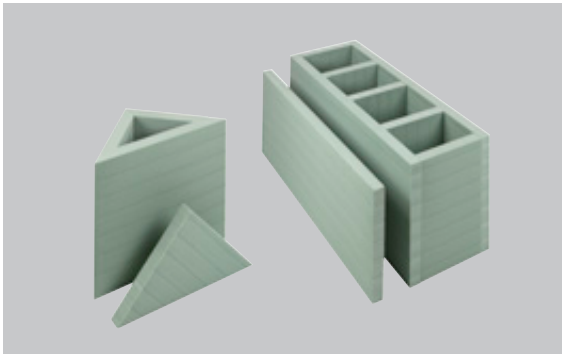
Rectangular BenchSeat™

PART NO.	DESCRIPTION	SIZE	INCLUDES
QDTRIANGLE-SB	LARGE TRIANGULAR BENCHSEAT™	24" X 24" X 20"	(3) PET Vertical Triangular Supports, (1) 16" X 22-5/8" Triangular Bench Surface
QDTRIANGLESMALL-SB	SMALL TRIANGULAR BENCHSEAT™	16" X 16" X 20"	(3) PET Vertical Triangular Supports, (1) 24" X 32" Triangular Bench Surface
QDRECTANGLE-SB	RECTANGULAR BENCHSEAT™	48" X 16" X 20"	(5) PET Vertical Rectangular Supports, (2) 48" X 18" Front and Back Supports, (1) 48" X 20" Rectangular Bench Surface

QuickDrain products can be compatible with other systems.
Contact us to find the perfect parts for your project.

BenchSeat™: Universal design with elegant style.

The ideal complement to SquareDrain and QuickDrain's complete shower solution, the BenchSeat™ balances the elegant style, universal design and accessibility that is essential for many.



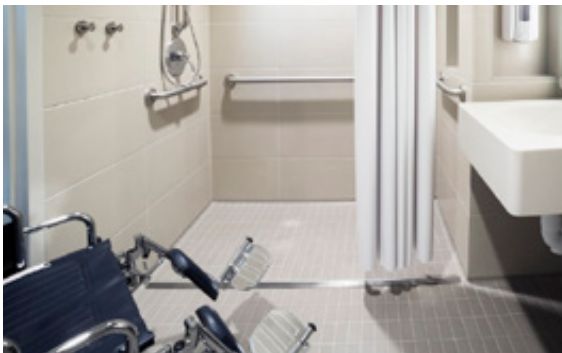
Jobsite-Ready

Ready to assemble with no framing required, reducing the amount of lumber on site. No mechanical fasteners or anchors are required.




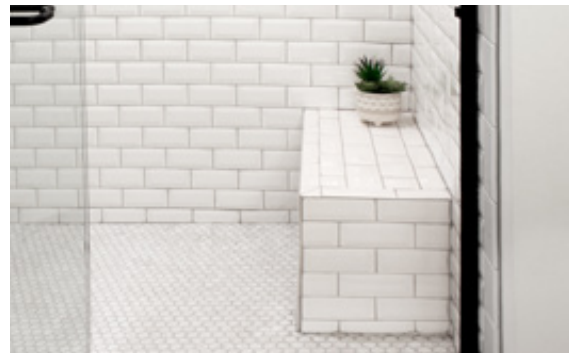
Sustainable

2" rigid PET panels made from 100% recycled plastic come ready to assemble and can be easily trimmed on site for custom fit.



Universal Design & ADA Compliance

Accommodates the ADA standards for height and exceeds ADA weight guideline of 250lbs. 



Elegance

Available in three configurations including a rectangle bench and large or small corner bench options. Custom sizes available upon request.



Commitment to community.

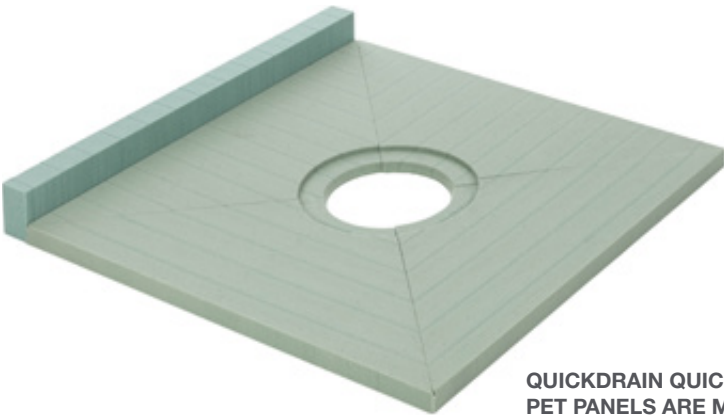
As part of our commitment to minimize our environmental footprint, we use 100% recycled plastic bottles (Polyethylene Terephthalate or PET) to manufacture our QuickSlope shower panels. These non-reactive, economical and shatterproof parts do not degrade over time and perform even under the toughest conditions at 145 PSI.

If you're looking to obtain LEED certification for your next project, please contact a QuickDrain representative to hear about our selection of environmentally conscious products, which may qualify for LEED points.



20 million+ Plastic Bottles Recycled

For every QuickDrain shower panel installed, 450 plastic bottles are saved from landfills – 20 million bottles and counting.



QUICKDRAIN QUICKSLOPE PET PANELS ARE MADE FROM 100% RECYCLED PLASTIC.





HAVE QUESTIONS?

Contact a QuickDrain representative at 866-998-6685

NEED MORE INFORMATION?

Visit LRBrands.com/QuickDrain

deliver quality. build trust. improve lives.

QuickDrain USA™ & L.R. Brands are a part of the Oatey family of companies.

LCS1314C 04/22