



UNIVERSAL FLANGE ADAPTOR CONVERSION KIT TECHNICAL SPECIFICATION

DESCRIPTION

The QuickDrain Universal Flange Adaptor is made of reinforced nylon and molded in the USA. It is available in two sizes: large (13") and small (10-1/2"). The flange adaptor shall have universal bolt slots and Phillips head screws which can be fastened to most drain bases. It shall have a molded TPE dual profile gasket which seals to most PVC/ABS drain bases to upgrade or retrofit from traditional pan liner to topical membrane waterproofing. It shall have integrated threads and a weep zone to allow water to properly migrate to the drain. The flange shall be textured to bond topical fabric membrane with thinset and compatible to liquid applied waterproofing.

APPLICATIONS/USES

- Industrial, commercial and residential showers
- Gang showers
- Pet Showers

SUITABLE SUBSTRATES (INTERIOR ONLY)

- Concrete
- Exterior Glue Plywood
- Cement backer board**
- OSB or Avantech

**Consult cement backer board manufacturer for specific installation recommendations

FLANGE ADAPTOR CONVERSION KIT INCLUDES:

Flange Adaptor (1), Weep Guard (1), Phillips Head Screws (4)

APPROVALS AND LISTINGS

Before installing QuickDrain USA system, check with your local building department/plumbing inspector to ensure compliance with the local building codes. QuickDrain USA LLC is not responsible for any conflicts with local building codes. QuickDrain USA LLC is not responsible for improper installation of any part of the assembly or the waterproofing membrane. Dimensions are subject to manufacturer's tolerance and can change without notice.

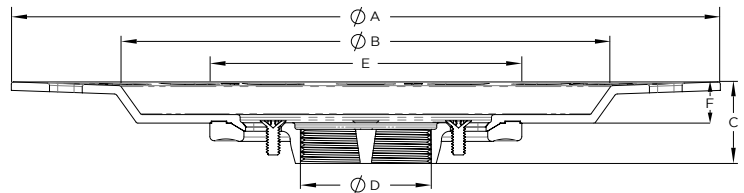
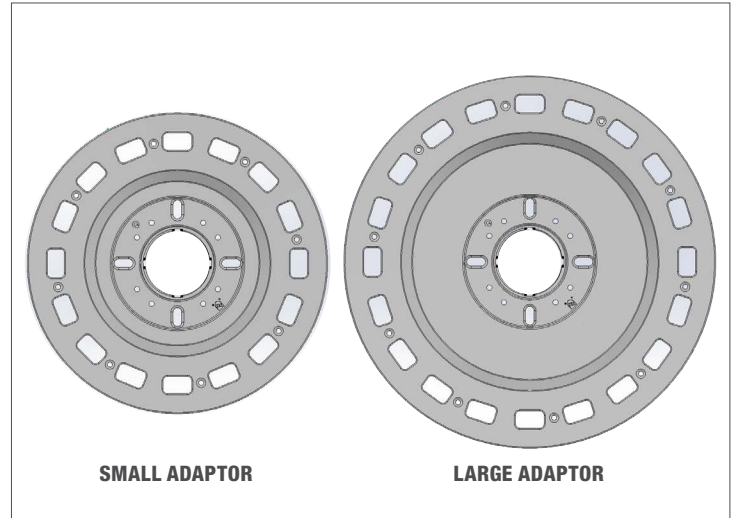
PRODUCT SELECTOR



FLANGE ADAPTOR CONVERSION KIT		
✓	Flange Adaptor Size	Product Number
	Small, Universal	QDCONVERSIONKIT-SF
	Large, Universal	QDCONVERSIONKIT-LF

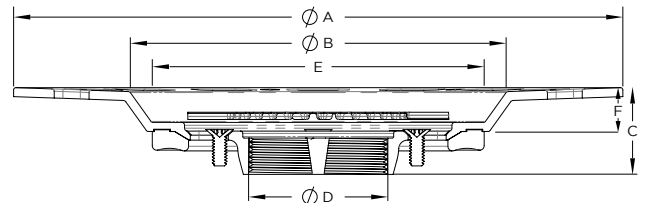
Universal Flange Adaptor is compatible to most PVC/ABS drain bases including Oatey®, Jones Stephens™, Sioux Chief, and AB&A™ models. Please reach out to Technical Support for additional information.

Job Name _____	Item # _____
Location _____	
Engineer _____	Contractor _____
PO # _____	Tag _____
Representative _____	



DIMENSIONS - LARGE ADAPTOR

[A]:	Width	13"	[D]:	Hub Dimension	2" Sch 40
[B]:	Recess Width	9"	[E]:	Compatible Drain Bodies	5", 6"
[C]:	Height	4"	[F]:	Drain Body Depth	1/4"



DIMENSIONS - SMALL ADAPTOR

[A]:	Width	10-1/2"	[D]:	Hub Dimension	2" Sch 40
[B]:	Recess Width	6-1/2"	[E]:	Compatible Drain Bodies	4"
[C]:	Height	4"	[F]:	Drain Body Depth	1/4"

Access BIM/Revit content through www.LRBrands.com/QuickDrain