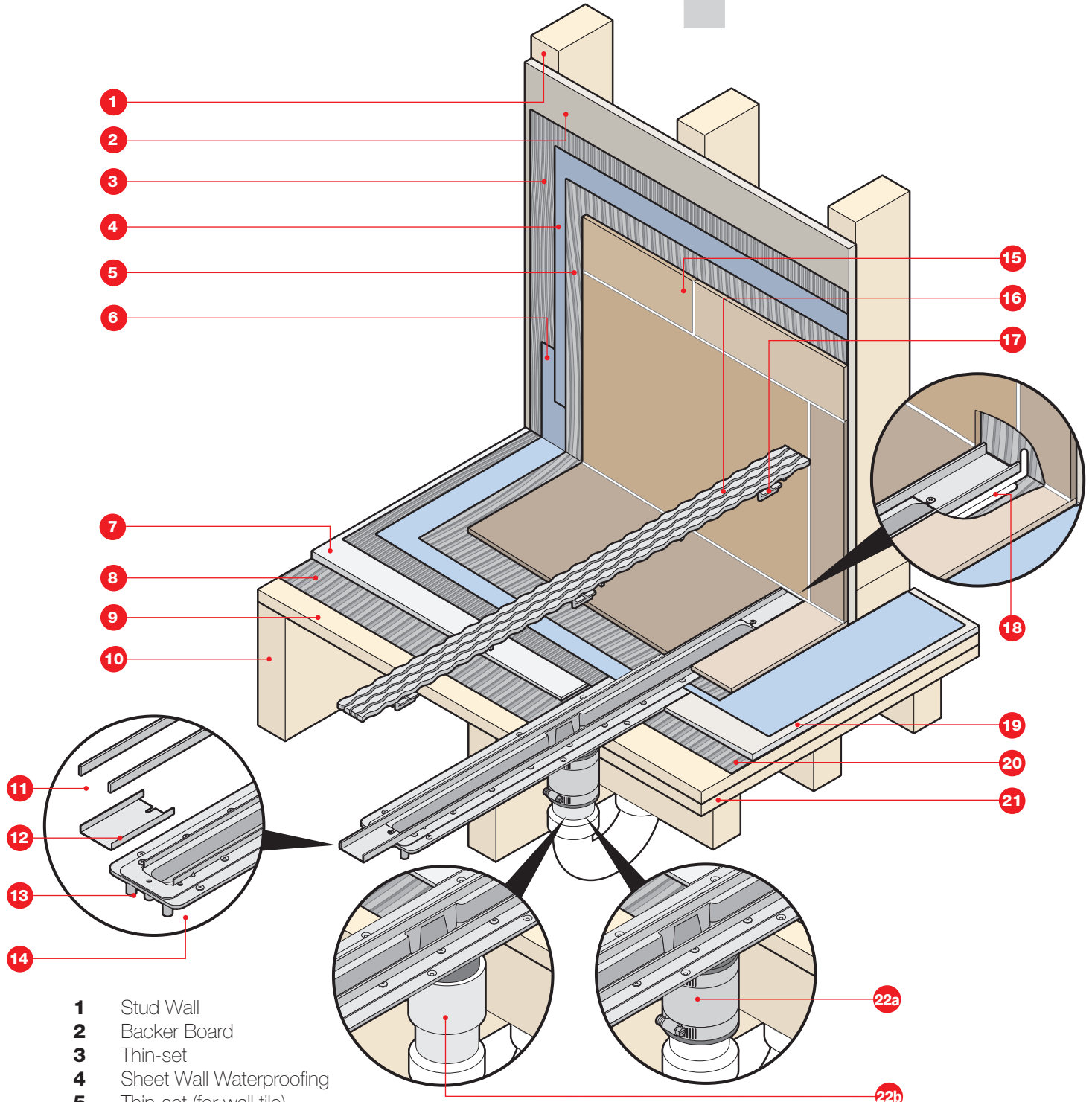


**ADA (Curbless) Installation  
Using ShowerLine Pan with  
Sheet Waterproofing**

# SHOWERLINE<sup>drain</sup>

by QUICKDRAIN USA<sup>®</sup>



- 1** Stud Wall
- 2** Backer Board
- 3** Thin-set
- 4** Sheet Wall Waterproofing
- 5** Thin-set (for wall tile)
- 6** Sheet Shower Pan Waterproofing
- 7** Quick Slope
- 8** Thin-set
- 9** Sub-floor
- 10** Floor Joists (wood floor)
- 11** Cover Chanel
- 12** Trough Extension
- 13** Clamping Collar
- 14** Drain Body

- 15** Wall Tile and Grout
- 16** Drain Cover
- 17** Height Adjustable Spacer
- 18** Capillary Break (runs full width of drain)
- 19** 1/4" Backer Board or De-coupling Matt
- 20** Thin-set
- 21** Blocking (wood floor)
- 22a** Shielded No-Hub Coupling
- 22b** PVC to PVC connection